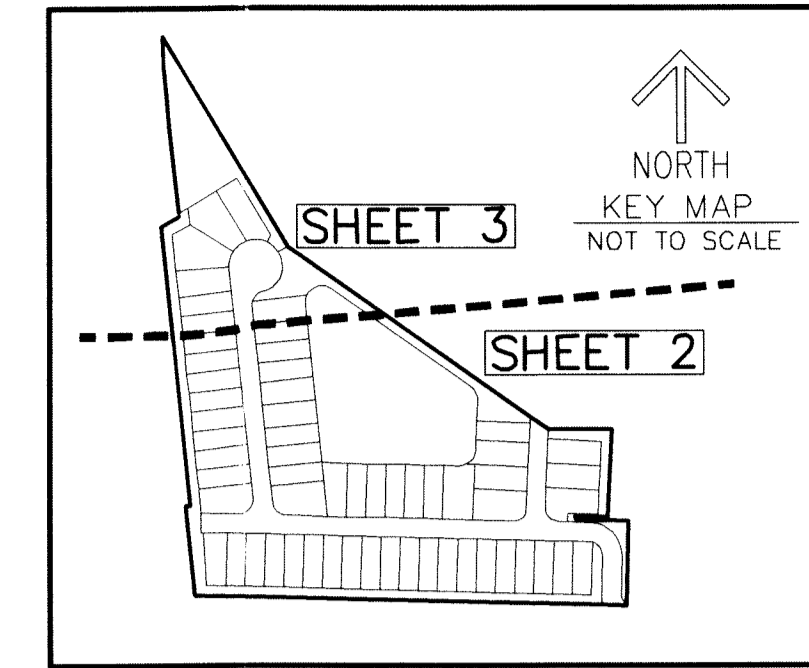


# LAKE COVE OF LAKE WORTH

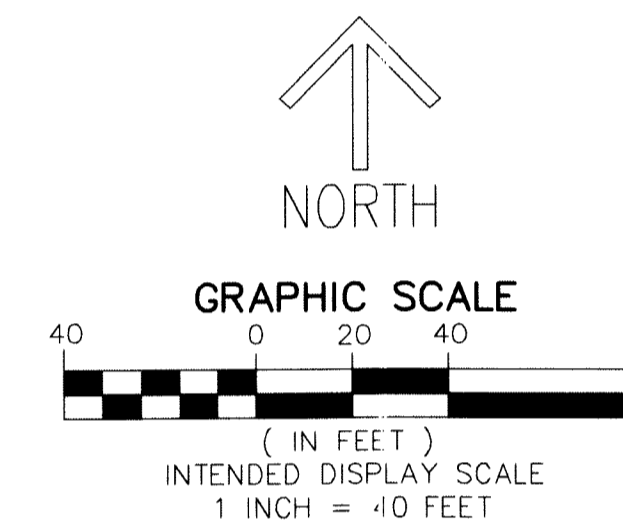
BEING A REPLAT OF A PORTION OF LOT 7, BLOCK K, AMENDED PLAT OF BLOCK K, L, M OF LAKE WORTH HEIGHTS, ACCORDING TO THE PLAT THEREOF, RECORDED IN PLAT BOOK 8, PAGE 6 ALL OF THE PUBLIC RECORDS OF PALM BEACH COUNTY, FLORIDA AND TOGETHER WITH A PARCEL OF RECLAIMED LAND ADJOINING BLOCK K, LAKE WORTH HEIGHTS SUBDIVISION, LYING IN SECTION 16, TOWNSHIP 44 SOUTH, RANGE 43 EAST, CITY OF LAKE WORTH, PALM BEACH COUNTY, FLORIDA.



171

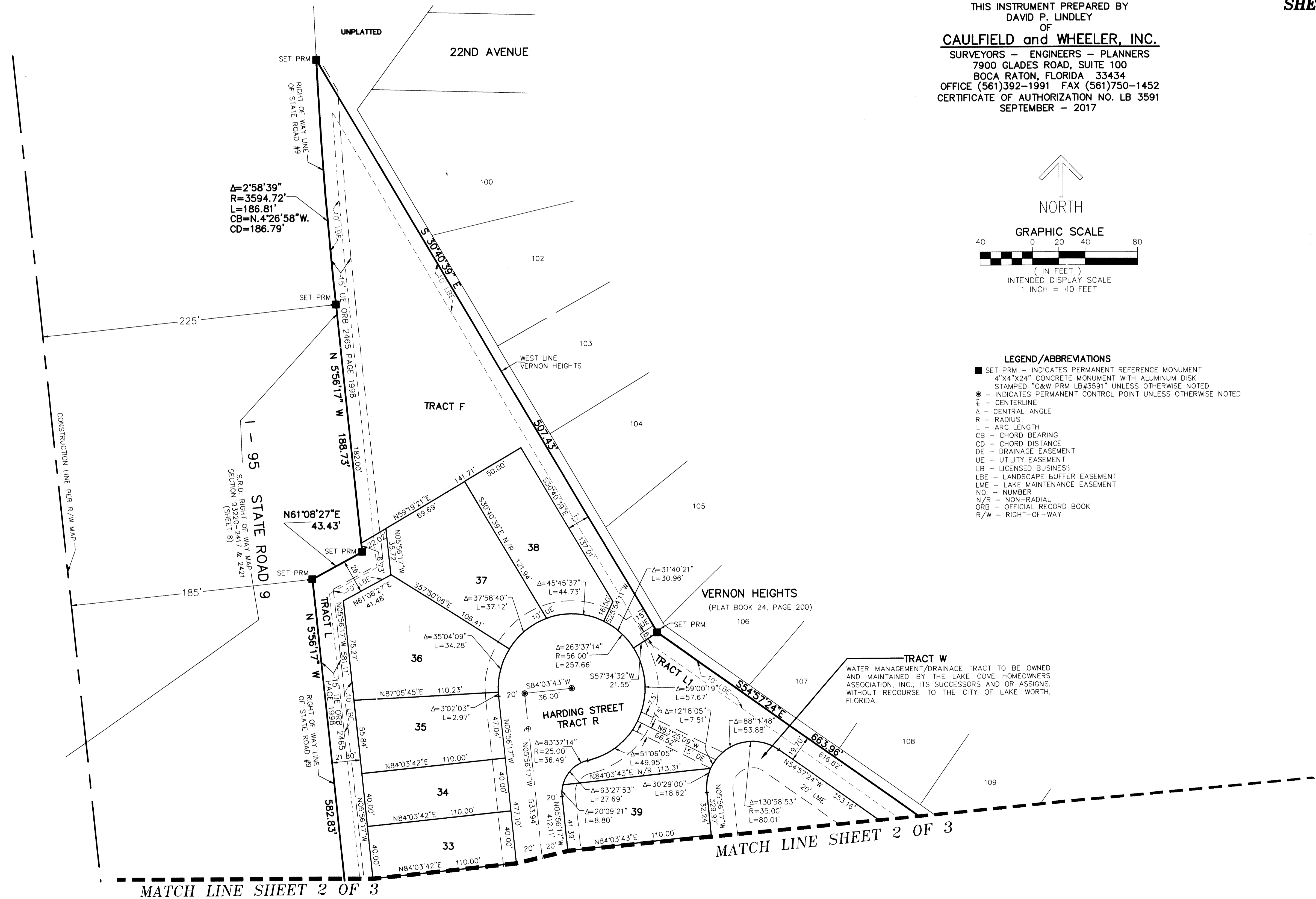
**SHEET 3 OF 3**

THIS INSTRUMENT PREPARED BY  
DAVID P. LINDLEY  
OF  
**CAULFIELD and WHEELER, INC.**  
SURVEYORS - ENGINEERS - PLANNERS  
7900 GLADES ROAD, SUITE 100  
BOCA RATON, FLORIDA 33434  
OFFICE (561)392-1991 FAX (561)750-1452  
CERTIFICATE OF AUTHORIZATION NO. LB 3591  
SEPTEMBER - 2017



**LEGEND/ABBREVIATIONS**

- SET PRM - INDICATES PERMANENT REFERENCE MONUMENT
- 4"x4"x24" CONCRETE MONUMENT WITH ALUMINUM DISK STAMPED "CA&W PRM LB#3591" UNLESS OTHERWISE NOTED
- - INDICATES PERMANENT CONTROL POINT UNLESS OTHERWISE NOTED
- CL - CENTERLINE
- Δ - CENTRAL ANGLE
- R - RADIUS
- L - ARC LENGTH
- CB - CHORD BEARING
- CD - CHORD DISTANCE
- DE - DRAINAGE EASEMENT
- UE - UTILITY EASEMENT
- LB - LICENSED BUSINESS
- LBE - LANDSCAPE BUFFER EASEMENT
- LME - LAKE MAINTENANCE EASEMENT
- NO. - NUMBER
- N/R - NON-RADIAL
- ORB - OFFICIAL RECORD BOOK
- R/W - RIGHT-OF-WAY



Δ=2°58'39"  
R=3594.72'  
L=186.81'  
CB=N.4°26'58"W.  
CD=186.79'

S.R.D. RIGHT OF WAY MAP  
SECTION 922417 & 2421  
(SHEET 8)

WATER MANAGEMENT/DRAINAGE TRACT TO BE OWNED AND MAINTAINED BY THE LAKE COVE HOMEOWNERS ASSOCIATION, INC., ITS SUCCESSORS AND OR ASSIGNS, WITHOUT RECOURSE TO THE CITY OF LAKE WORTH, FLORIDA.